



# Urban Lawn Landscape & Irrigation Company Ltd

Landscaping Design&Build | Irrigation | WaterFeatures | Maintenance

Landscaping excellence, creative solutions, quality craftsmanship

ABOUT US

## Transforming Landscapes Since 2020

Urban Lawn Landscapes delivers integrated landscaping services to multi-nationals, hotels, churches, schools, golf clubs, and estates across Kenya. We've created stunning modern landscapes throughout the region.

Our specialist team handles landscape design, construction, implementation, and ongoing maintenance. We blend site ecosystems with customer needs for lasting results.

### Our Approach

- Collaborate with architects and contractors
- Understand site characteristics thoroughly
- Professional equipment for any scale
- Rich nursery with quality plants

# Company Overview



## Multidisciplinary Expertise

Established in 2020, Urban Lawn is a multidisciplinary firm specializing in landscaping, irrigation, and water engineering across Kenya.



## Unified Entity & Expanded Reach

Through the strategic integration of Farmline East Africa Ltd, we operate as a unified entity, offering expanded expertise in horticulture and environmental management.



## End-to-End Solutions

We deliver comprehensive services covering design, master planning, construction, installation, and long-term operation and maintenance.



## Diverse Project Portfolio

Serving government institutions, commercial developments, and residential projects across Kenya and the wider region.

## MISSION

# Our Mission

To provide creative, innovative, and sustainable solutions through unique designs and engineering excellence that meet client needs while enhancing the environment.

We are committed to delivering solutions that balance aesthetic beauty with environmental responsibility, ensuring every project contributes positively to its surroundings while exceeding client expectations.

## VISION

# Our Vision



To be the premier landscaping, irrigation, and water engineering company in Kenya and the region, recognized for quality, innovation, and reliability.

We aspire to set the standard for excellence in our industry, becoming the trusted partner of choice for clients seeking transformative landscape and water solutions throughout East Africa.

## VALUES

# Core Values

Our values guide every decision we make and every project we undertake, ensuring consistent excellence and ethical practice across all operations.



### Innovation

Embracing creative solutions and cutting-edge techniques to deliver exceptional results



### Service Excellence

Exceeding client expectations through quality craftsmanship and attention to detail



### Teamwork

Collaborating across disciplines to achieve integrated, comprehensive solutions



### Sustainability

Protecting the environment through responsible practices and eco-friendly design

# Scope of Services – Landscape Architectural & Design Capacity

Urban Lawn offers comprehensive landscape architectural services that combine creative vision with technical excellence.

## **Landscape Architectural Design**

Creative conceptualization and detailed planning

## **Master Planning**

Large-scale site development and urban design

## **Podium Gardens & Urban Public Spaces**

Elevated landscapes and community gathering areas

## **Hospitality & Luxury Residential Landscapes**

High-end resort and estate environments

## **Climate-Responsive & Sustainable Design**

Environmentally conscious solutions for African climates

# Scope of Services – Landscaping & Irrigation



## Design

Landscapedesign  
& master  
planning



## Construction

Softscape &  
hardscape  
landscape  
construction



## Irrigation & Waterfeatures

Irrigation and  
Water feature  
design &  
installation



## Establishment

Lawn  
establishment &  
rehabilitation



## Maintenance

Garden  
maintenance  
contracts



## Planting

Treeplanting&  
hedge  
management



# Scope of Services – Consultancy Services

Beyond construction and installation, UrbanLawn provides expert consultancy services to guide clients through complex landscape and environmental projects.

## Environmental Beautification Consultancy

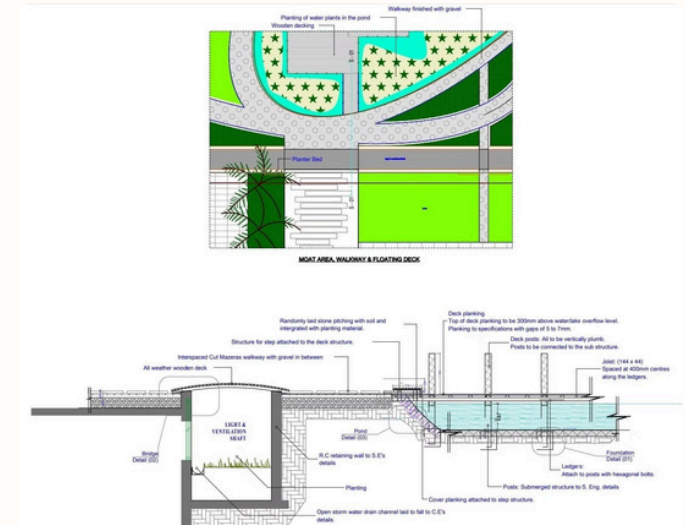
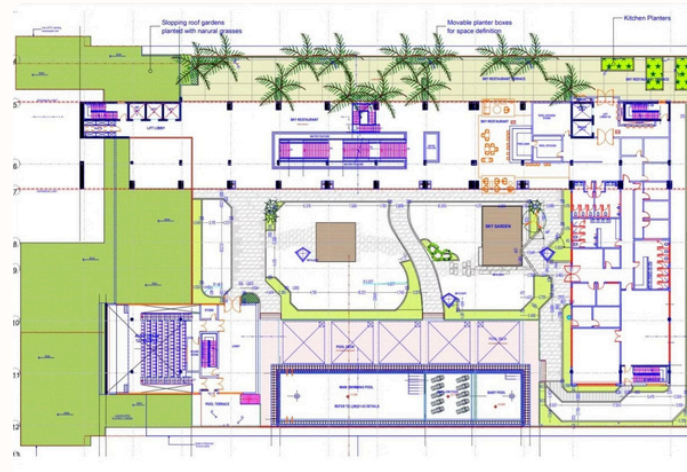
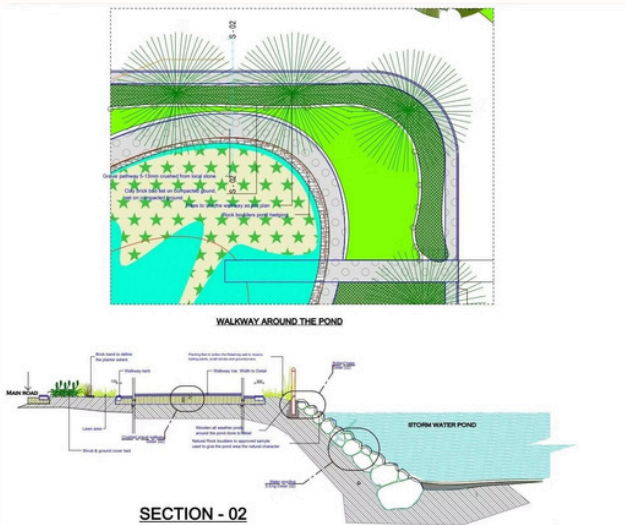
Strategic planning and design guidance for enhancing outdoor environments

## Project Management & Supervision

End-to-end project coordination ensuring quality, timeline, and budget compliance

## Landscape Audits & Rehabilitation

Comprehensive site assessments and restoration strategies for existing landscapes



# Scope of Services – Recreational & Wellness



## **Swimming Pool Construction & Maintenance**

Complete pool design, construction, and ongoing maintenance services for residential and commercial properties

## **Steam Bath & Sauna Installation**

Professional installation of wellness facilities for hotels, spas, and private residences

## **Jacuzzi & Spa Installations**

Luxury spa equipment installation and integration with landscape design

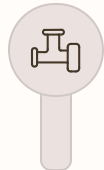
# Scope of Services – Water Engineering

Our water engineering division provides comprehensive solutions for water access, storage, and distribution, ensuring reliable water infrastructure for all project types.



## **Borehole Drilling, Equipping & Testing**

Professional drilling services with quality assurance and water testing



## **Pump Installation & Maintenance**

Submersible and surface pump systems with ongoing support



## **Water Storage & Distribution Systems**

Tank installation and piping networks for efficient water management



## **Decorative Water Features & Irrigation Systems**

Fountains, ponds, and artistic water installations and irrigation systems



## Our Team

**84**

**Total Staff**

Dedicated professionals  
serving our clients

**4**

**Technical Staff**

Skilled landscape  
specialists

**80**

**Semi-Skilled**

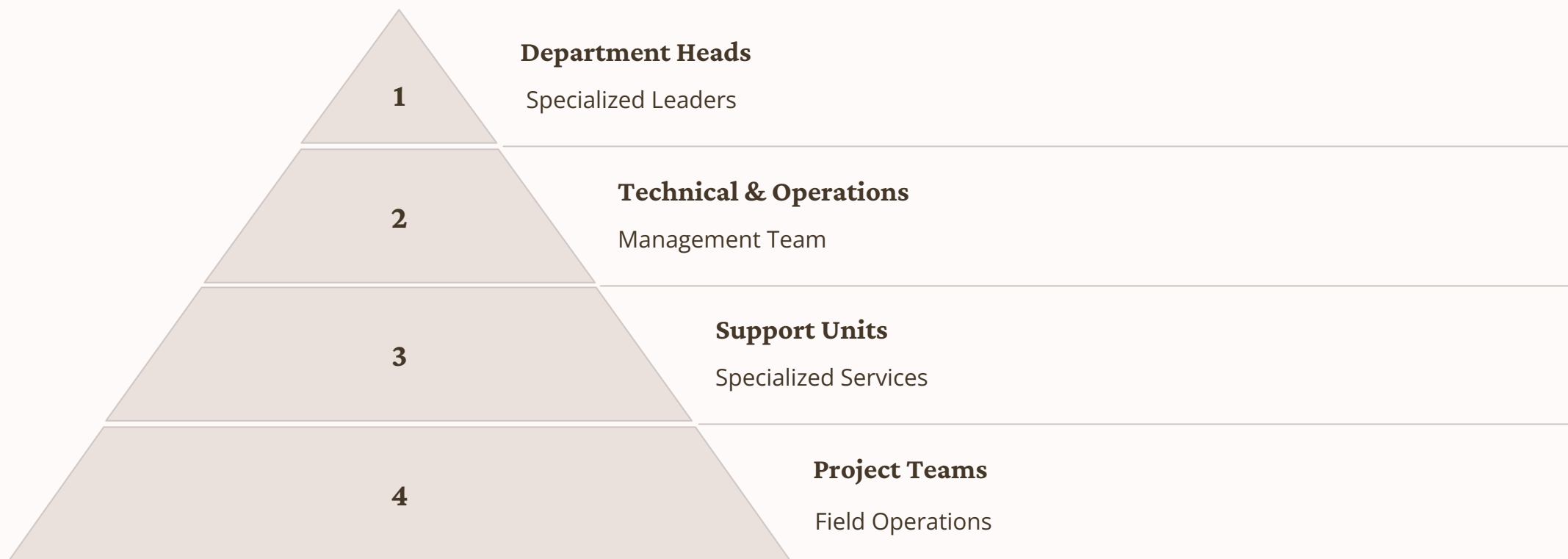
Experienced field workers

**147**

**Temporary**  
Flexible on-call project  
support

# Organizational Structure

Urban Lawn's organizational structure reflects our integrated approach, bringing together specialized expertise across landscape architecture, water engineering, horticulture, and technical operations under unified leadership.



## Department Heads



- **Hannah Mbugua** – Project Manager
- **Simon Kareithi** - Head of Technical Operations
- **Charles Kibe** - Head of Landscape Project Implementation
- **Rajab Ashiali** - Head of Landscape Architectural Design & Build

## Technical & Operations Management



- **Chris Oduori** – Technical Manager (Irrigation & Water Features)
- **James Nanzai** – Field Manager & Operations Coordinator

## Support Units



- **Benadetta Wambui** – Plant Nursery & Propagation Unit
- **Hudson Kiratu** – Landscaping Works Coordination
- **Elizabeth Wangari** – Landscaping Projects Field Management

## Project Teams



Site Supervisors | Technicians | Gardeners | Casual Labor

# Selected Landmark Projects

We've delivered exceptional landscaping and maintenance services to leading organizations across Kenya.



## Corporate Clients

- East African Breweries Limited (130,000 sqm)
- Communication Authority of Kenya (100,000 sqm)
- United Nations New Offices
- ICRAF (20,000 sqm)



## Healthcare & Education

- The Nairobi Hospital (15,000 sqm)
- USIU - Library & Science Block (12,000 sqm)
- Adventist University of Africa
- Utalii College Football Pitch



## Residential & Estates

- Rosslyn Gardens Estate (26 plots)
- Trident Grand Riverside
- One Riverside Drive
- Aspen Hills Estate
- Galleria Mall

# COMPANY PORTFOLIO: LANDSCAPING & MAINTENANCE PROJECTS

| SITE   | SIZE / SCALE                                 | TYPE OF SERVICE                          | STATUS               | CLIENT  | CONTACT PERSON   |
|--|--|--|----------------------|---|--|
| General Conference of SDA, East-Central Africa Division – Rongai<br>Head Quarters Offices & Staff Houses<br>Adventist University of Africa   | 77,560 Sqm                                   | Landscaping                              | Complete             | Concrete Jungle   | Mr. Hobson Tel: 0722792865   |
|  | 4 Km<br>8,000 Sqm                            | Perimeter Hedge<br>Landscaping           | Complete<br>Complete | N.K Brothers<br>Getso<br>Consultant   | Mr. Navin<br>Tel: 0734238101<br>Mr. Obae<br>Tel: 020 2711400   |
| International Centre For Research In Agro forestry ( ICRAF )   | 20,000Sqm                                    | Maintenance                              | Complete             | ICRAF   | Mr. Jimmy Kioo<br>Tel: 254 20 7224001  |
| Communication Authority of Kenya ( CAK )   | 100,000 Sqm                                  | Maintenance                              | Complete             | CCK   | Mr. Salim Kiza<br>Tel: 254 20 4242000  |
| The Nairobi Hospital   | 15,000 Sqm                                   | Maintenance                              | Complete             | The Nairobi Hospital  | Ms. Susan<br>Tel: 020 2722160  |
| Church of Jesus Christ for Latter day saints (CJCLD Saints ) chapels<br><br><ul style="list-style-type: none"> <li>• Buruburu,Kasarani,Makutano</li> <li>• Ndaranjani, Upperhill, Westlands</li> </ul> | 9,000 Sqm                                    | Landscaping                              | Complete             | CJCLD   | Mr. H. Usi / Ms. Millicent<br>Tel 020 – 2735250  |
| CDC – KEMRI  | 6000 Sqm                                     | Landscaping<br>Maintenance               | Complete<br>Complete | American Embassy  | Ms. Benta<br>Tel. No: 02713008   |
| Aspen Hills Estate   | 2,000 Sqm                                    | Maintenance                              | On going             | Aspen Hill Estate   | Mr. Kariuki<br>Tel: 020 – 4184057 / 0733 985468  |
| Rosslyn Gardens Estate   | 26 Plots                                     | Landscaping                              | Complete             | Pepper Group  | Ms. Elizabeth Tel: 254-20-4185056/7<br>Mr. Vincent Tel: 020 554706                                     |
| African Wildlife Foundation (AWF)  |  | Landscaping<br>Maintenance               | Complete Ongoing     | (AWF)   | Andrew Mwangi Tel: 020 2664865   |
| United Nations New Offices<br>One Riverside Drive Ltd.   |  | Landscaping                              | Complete             | Laxmanbhai Construction   | Mr Mutinda Musau<br>Tel: +254 722 222 244  |
|  | 1500Sqm                                      | Landscaping                              | Complete             | AMS Properties  | Ms Chao Sio Tel:   |
| Delta Towers   |  | Landscaping                              | Complete             | Delta Properties Ltd.   |  |
| Five Star Gardens  | 30 flats                                     | Landscaping                              | Complete             | AMS Properties  | Mr Mutinda Musau<br>Tel: +254 722 222 244  |
| Civicon Group – GIBB Africa  | 3500Sqm                                      | Landscaping                              | Complete             | GZI   | Mr. Ben Kiilu Tel: +254 737 446103<br>Mr. Nashon Okowa<br>Tel: +254 726 860568                         |
| Trident Riara Heights, Riara   |  | Landscaping                              | Complete             | Trident Estate Ltd  | Mr. John Kiwinda Tel: +254 733 791101  |
| East African Breweries Limited   | 130,000sqm                                   | Maintenance                              | Complete             | East African Breweries Limited  | Mr. Simon Woods Tel: +254 720 623855   |
| United States International University (USIU)<br>– New Library Complex & Science Block<br>Galleria Shopping Mall   | 12,000sqm                                    | Landscaping                              | Complete             | Beglin Woods Architects   |  |
|  | 8,000sqm                                     | Maintenance                              | Complete             | Norkan Investment Limited   | Ms. Bizzu Kanja Tel: +254 704 498463   |
| New Swiss Chancery – Rosslyn Green Crescent  |  | Landscaping<br>Maintenance               | Complete<br>Complete | Parbat Siyani Construction Ltd<br>Swiss Embassy<br>Trident Estate Ltd<br>Kariobangi<br>Sharks Football Club | Mr. Bruce Hobson Tel: +254 722792865<br>Mr. Peter Munyao Tel: +254 716412833                           |
| Baraka Estate - Embakasi   | 33 house units                               | Landscaping                              | Complete             | Trident Estate Ltd<br>Kariobangi<br>Sharks Football Club  | Mr. Edward Njoroge<br>Tel: +254 728864472  |
| Utalii College Football Pitch  | Football Pitch                               | Landscaping                              | Complete             | Sharks Football Club  | Mr. Robert Maoga – Chairman<br>Tel: +254 723608902<br>Ms. Chloe Humphreys<br>Tel: +254 718793052       |
| Riviera Project  | 9 high-end houses (Lower Kabete)             | Landscaping                              | Complete             | Landscape Studio  |  |
| Trident Grand Riverside (TGR)  | High – end apartments (riverside drive)      | Landscaping                              | Complete             | Trident Estates Ltd   | Mr. Edward Njoroge<br>Tel: +254 728864472  |
| Agri - seed Company Limited  | Warehouse landscaping                        | Landscaping                              | Complete             | Agri - seed Company Limited   | Mr. Fabian<br>+254 722809251   |
| Rojada project   | 2 high – end houses (Gigiri)                 | Landscaping                              | Complete             | Rojada (Martin Dunford)<br>Seyani Brothers Ltd<br>Team 2 Architects   | Mr. Bruce Hobson Tel: +254 722792865   |
| Malawian High Commission - Westlands   | New Chancery                                 | Landscaping                              | Complete             | Brothers Ltd<br>Team 2 Architects   |  |
| Southfield Mall - Embakassi  | Commercial Mall Development                  | Landscaping                              | Complete             |   | Mr. Deepak Krishna<br>Tel: +254 728108930  |
| Ngong Villas – Savannah Estate   | 6 Town villas                                | Landscaping                              | Complete             | Beacon Consultants Ltd  | Mr. Nashon Okowa<br>Tel: +254 860568   |
| College of Insurance – Leadership Center   | Commercial Hotel & Events' place Development | Landscaping, water features & irrigation | Ongoing              | Lariak Landscape Ltd  | Mr. Peter Mwiranga<br>Tel: +254 720610747  |
| Tamarind Tree Hotel  | Tamarind Group Hotel                         | Landscaping                              | Complete             | Concrete Jungle   | Mr. Bruce Hobson Tel: +254 722792865   |
| CWA Arch Diocese of Nairobi  | 7,000 Sqm                                    | Sports field levelling                   | Complete             | CWA Arch Diocese of Nairobi   |  |
| Mountain view School   | 13,000 Sqm                                   | Sports field levelling                   | Ongoing              | Mountain View School  | Mrs. Ruth<br>Tel: +254 721969004   |
| Kisii Stadium  | 10,000 Sqm                                   | Grass planting and drainage works        | Complete             | Minister of Public Works– Kisii County  | Mr. Vincent Sagwe Tel: +254717 118246<br>Email: <a href="mailto:vsagwe@gmail.com">vsagwe@gmail.com</a> |
| Australian Embassy (Borehole Project)  |  |  |                      |   |  |
| Kiambu Institute National Polytechnic  | 15,030 Sqm                                   | Grass planting and drainage works        | Complete             | KINAP   | Mr Bonvin<br>Tel: +254722134560  |

# Equipment & Capacity

UrbanLawnmaintainsacomprehensivefleetofspecialized equipment and facilities, enabling efficient project execution across all service areas.



## Heavy Machinery

Excavators, tractors, dozers & tipper trucks for earthworks and material handling



## Grounds Maintenance Equipment

Ride-on & gang mowers for efficient large-area maintenance



## Borehole Drilling Equipment

Professional drilling rigs and testing equipment



## Advanced Irrigation Systems

Modern irrigation technology installation tools



## Plant Nurseries & Propagation Facilities

On-siteplantproduction and quality control

# Professional Equipment Fleet

## Specialized Machinery

- Caterpillar 320 Excavator
- Caterpillar D4 Dozer
- 2 FUSO Tippers
- New Holland TT55 Tractor
- 7-Gang mower for vast coverage
- 6 Ride-on mowers (Craftsman/Honda/Husqvarna)
- 9 Self-driven mowers (12.5-13 HP)

## Support Vehicles

Mitsubishi Fuso lorry, Isuzu TFR pickup, Toyota Probox, 3 trailers

## Precision Tools

- Hedge trimmers & motorized hand trimmers
- Classen sod cutter Lawn roller & scarifier
- Rotavator & disc ploughs
- Fertilizer spreader
- Tree climbing gear
- 



# Sustainability & Environmental Responsibility

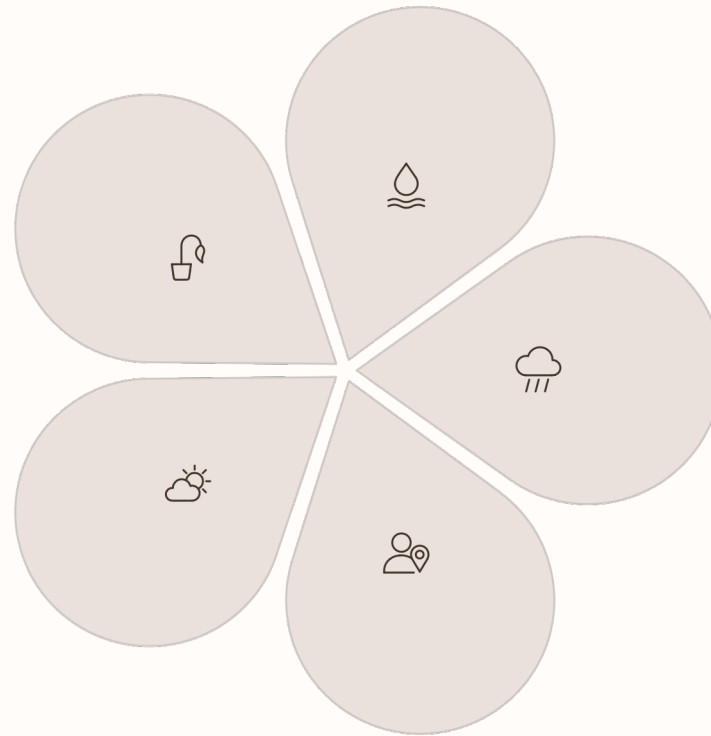
UrbanLawn is committed to environmental stewardship, integrating sustainable practices into every project to minimize ecological impact while maximizing long-term viability.

## Indigenous & Drought-Tolerant Planting

Native species selection for water conservation

## Climate-Resilient Design Principles

Adapting to changing environmental conditions



## Smart Irrigation Systems

Efficient water delivery and automated controls

## Rainwater Harvesting & Reuse

Capturing and utilizing natural precipitation

## Locally Sourced Materials

Supporting local economy and reducing carbon footprint

# Health & Safety

Urban Lawn prioritizes the safety and well-being of all personnel, clients, and site visitors through rigorous health and safety protocols.



1

## Compliance with Occupational Health & Safety Regulations

Adherence to all national and international safety standards

2

## PPE Use on All Sites

Mandatory personal protective equipment for all workers

3

## Risk Assessments & Site Supervision

Proactive hazard identification and continuous monitoring

4

## Staff Safety Training

Regular training programs and safety awareness initiatives

# Why Urban Lawn

## Integrated Multidisciplinary Services

One-stop solution for landscaping, irrigation, water engineering, and design



## Strong Leadership & Experienced Teams

Proven expertise across all service areas with dedicated department heads



## Proven Landmark Projects

Portfolio of prestigious institutional, commercial, and residential projects

## Sustainability-Driven Approach

Environmental responsibility integrated into every project decision



## Reliable Delivery & Quality Assurance

Consistent excellence in execution and long-term client satisfaction

# Contact Information



## Urban Lawn Landscape & Irrigation Company Ltd

### Address:

P.O. Box 146-00217  
Nairobi, Kenya

### Phone:

+254 715 484 706  
+254 784 552 900

### Email:

[info@urbanlawn.co.ke](mailto:info@urbanlawn.co.ke)

### Website:

[www.urbanlawn.co.ke](http://www.urbanlawn.co.ke)

Get In Touch

Visit Website